

Customised Charts

Size 20"x30" Laminated & Mounted Framed on Board

← 20" →

College Logo & Name



Antihyperlipidemic Drugs

ANTHYPERLIPIDEMIC DRUGS

HMG-CoA REDUCTASE INHIBITORS

- Atorvastatin
- Fluvastatin
- Levostatin
- Pravastatin
- Rosuvastatin
- Simvastatin

FIBRATES

- Fenofibrate
- Gemfibrozil

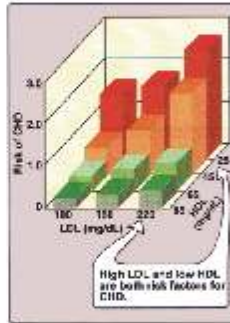
NIACIN

BILE ACID SEQUESTRANTS

- Colestevan
- Colestyramine
- Cholestyramine

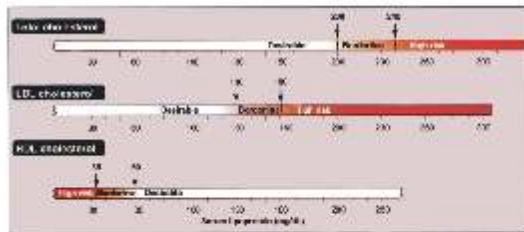
CHOLESTEROL ABSORPTION INHIBITORS

- Ezetimibe

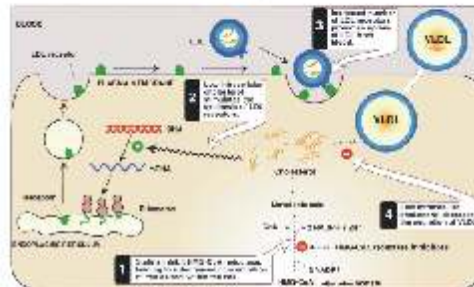


Effect of circulating LDL and HDL on the risk of coronary heart disease(CHD).

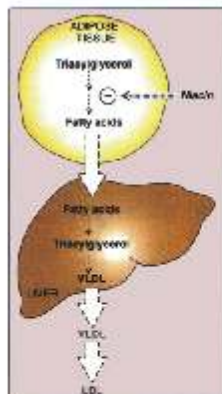
Summary of antihyperlipidemic drugs. HMG-CoA = 3-hydroxy-3-methylglutaryl coenzyme A.



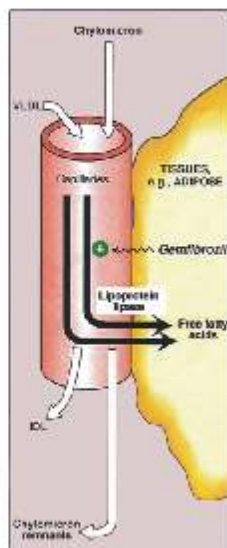
Goal lipidprotein levels achieved with dietary or drug therapy for the prevention of coronary heart disease. [Note: Lower goals for total and LDL cholesterol are recommended for patients with a history of heart disease.]



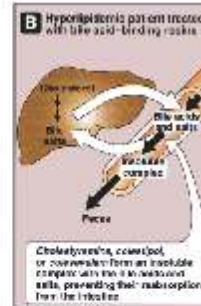
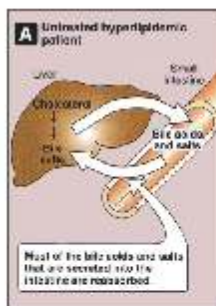
Inhibition of HMG CoA reductase by the statin drugs.



Niacin inhibits lipolysis in adipose tissue, resulting in decreased hepatic VLDL synthesis and production of LDLs in the plasma.



Activation of lipoprotein lipase by gemfibrozil.



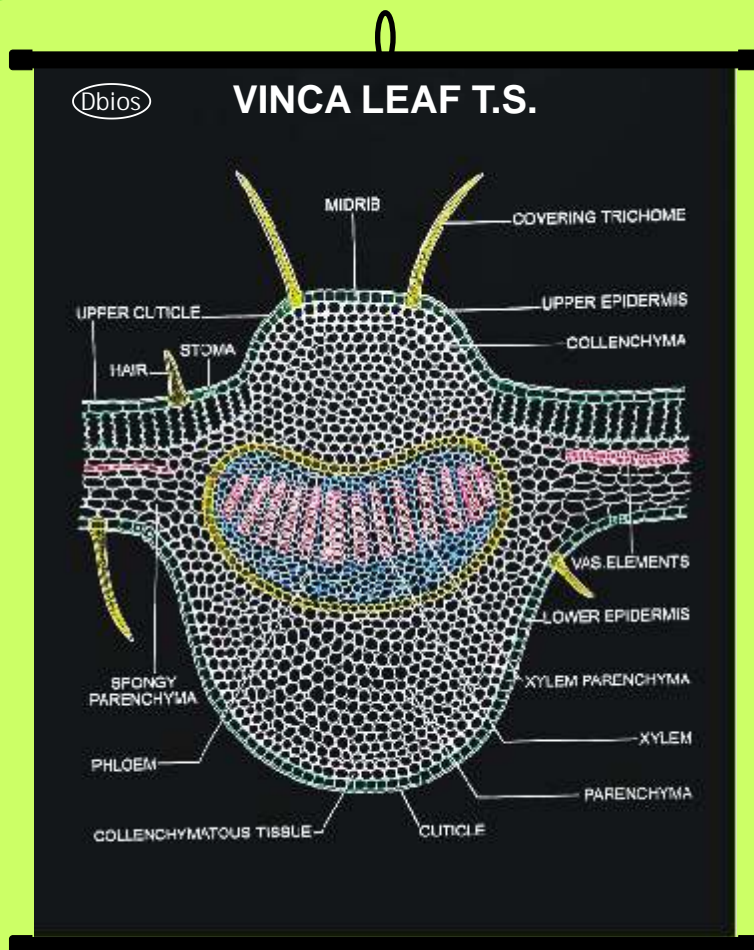
Mechanism of bileacid-binding resins.

Drug Class	↑ LDL-C	↑ HDL-C	↑ TG
HMG-CoA reductase inhibitors (statins)	+++	++	+
Fibrates	+	+++	---
Niacin	++	+++	---
Bile acid sequestrants	---	+	---
Cholesterol absorption inhibitors	+	+	+

Characteristic of hyperlipidemic drug families. HDL = high-density lipoprotein; HMG-CoA = 3-hydroxy-3-methylglutaryl-coenzyme A; LDL = low-density lipoprotein.

30" ↑ ↓

Dbios[®] Pharma Educational Aids



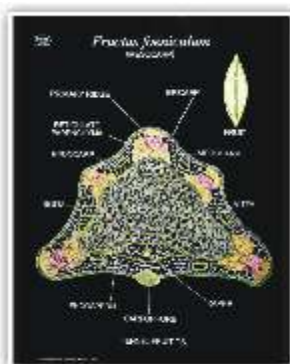
CH 733



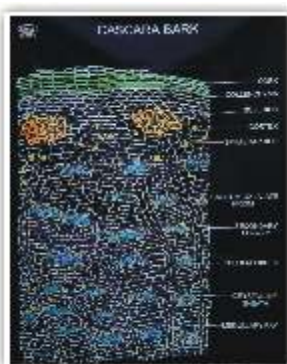
CH 2683

The Following charts are available on Superfine Black Rexine which are waterproof and fitted with light weight plastic rollers. A charts as per A.I.C.T.E. requirement.

Size 30"X40"Approx



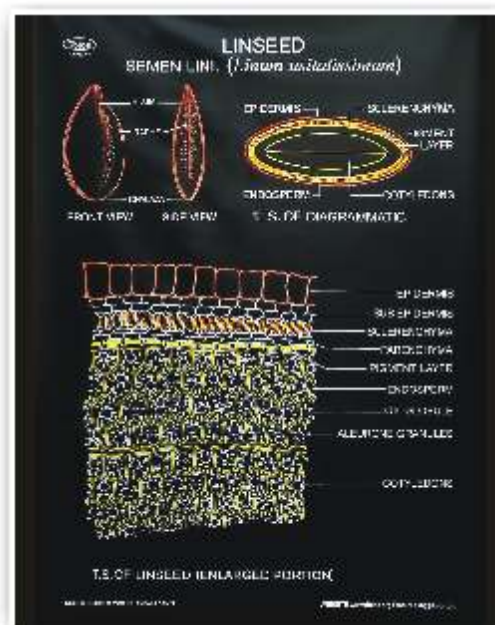
CH 702



CH 704



CH 705



CH 732

- | | | | |
|--------|----------------------------------------|--------|-------------------------------------------------------------------------------|
| CH 701 | Liquorice Root T.S.
(Stolon) | CH 732 | Linseed |
| CH 702 | Fennel Fruit T.S.
(Mesocarp) | CH 733 | Vinca leaf |
| CH 703 | Quassia Wood T.S., T.L.S.,
& R.L.S. | CH 734 | Urginea (Indian Squill) |
| CH 704 | Cascara Bark | CH 735 | Ashoka Bark T.S. |
| CH 705 | Kurchi Bark T.S. | CH 736 | Ergot Sclerotium |
| CH 706 | Eucalyptus Leaf T.S. | CH 737 | Hyoscyamus Leaf T.S. |
| CH 707 | Cardamom Seed | CH 739 | Microscopical Characteristics of
Powdered Drug: Clove Bud |
| CH 708 | Belladonna Root T.S. | CH 740 | Microscopical Characteristics of
Powdered Drug: Cassia Bark |
| CH 709 | Datura Leaf T.S. | CH 741 | Microscopical Characteristics of
Powdered Drug: Cinnamon Bark |
| CH 710 | Gentian Root T.S. | CH 742 | Microscopical Characteristics of
Powdered Drug: Cinchona Bark |
| CH 711 | D.Lanata Leaf T.S. | CH 743 | Microscopical Characteristics of
Powdered Drug: Isapgol Seed |
| CH 712 | Ipecac Root T.S. | CH 744 | Microscopical Characteristics of
Powdered Drug: Rauwolfia Root |
| CH 713 | Coriander Fruit T.S. of
Mericaip | CH 745 | Microscopical Characteristics of
Powdered Drug: Senna Leaf |
| CH 714 | Vasaka Leaf T.S. | CH 746 | Microscopical Characteristics of
Powdered Drug: Datura Leaf |
| CH 715 | Podophyllum Rhizome T.S. | CH 767 | Bryonia alba (Cucurbitaceae) |
| CH 716 | Digitalis purpurea Leaf T.S. | CH 768 | Ficus indica (Urticaceae) |
| CH 717 | Pepper Fruit T.S. | CH 769 | Hyoscyamus (Solanaceae) |
| CH 718 | Ispaghula Seed T.S. | CH 770 | Chelidonium majus (Papaveraceae) |
| CH 719 | T.S. Portion of Clove-
Flower Bud | CH 771 | Digitalis purpurea (Scrophulariaceae) |
| CH 720 | T.S. Rauwolfia Root | CH 772 | Calendula officinalis (Compositac) |
| CH 721 | Cinchona Bark | CH 773 | Ignatia amara (Loganaceae) |
| CH 722 | Cinammon Bark | CH 774 | Belladonna (Solanaceae) |
| CH 723 | T.S Aconite Root | CH 775 | Stramonium (Solanaceae) |
| CH 724 | T.S Dill fruit | CH 221 | Plant Anatomy Part I Simple Tissues;
Parenchyma Collenchyma & Sclerenchyma |
| CH 725 | T.S Velerian Root | CH 222 | Plant Anatomy Part II Complex Tissues;
Xylem |
| CH 726 | T.S Ephedra Stem | CH 223 | Plant Anatomy Part III Complex Tissues;
Phloem |
| CH 727 | Cassia Bark | CH 233 | Brassica Campestris (Mustard) |
| CH 728 | Ginger Rhizome | CH 238 | Althaea rosea (Holly Hock) |
| CH 729 | Senna Leaflet | | |
| CH 730 | Podophyllum Root | | |
| CH 731 | Nux-Vomica Seed | | |

- CH 239 *Hibiscus rosa sinensis* (Shoe Flower)
- CH 240 *Gossypium herbaceum*
- CH 241 *Citrus aurantium* (Rutaceae)
- CH 269 *Avena sativa* (Oat)
- CH 270 *Zea mays* (Maize)
- CH 273 *Triticum vulgare* (Wheat)

PLANT PATHOLOGY

- CH 104 Plant Diseases : Bacterial & Viral

- CH 105 Plant Diseases: Fungal

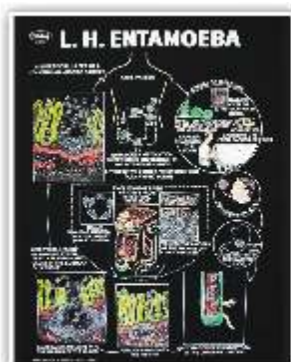
MEDICINAL PLANTS

- CH 106 Medicinal Plants-I
(Exported from India)
- CH 107 Medicinal Plants-II
(Imported in India)
- CH 108 Medicinal Plants-III
(Endangered Species)
- CH 109 Medicinal Plants-IV
(Prohibited to Export from India)

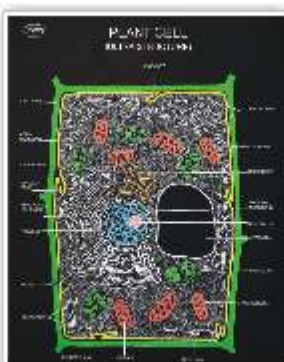


The Following charts are available on Superfine Black Rexine which are waterproof and fitted with light weight plastic rollers. as per A.I.C.T.E. requirement .

Size 30"X40" Approx



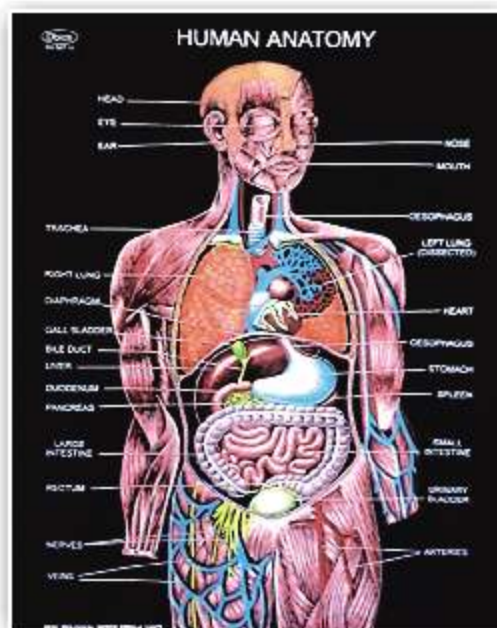
CH 33



CH 145



CH 150



CH 587

- CH 145 Plant cell (Ultra structure)
- CH 146 Plants Mitosis
- CH 147 Meiosis in Plants
- CH 148 Structure of chromosome during mitosis
- CH 149 Structure of Chromosome during meiosis
- CH 150 Parts of a Plant (Mustard)
- CH 151 Plant Kingdom - I (Flowering)
- CH 151A Plant Kingdom - II (Non-flowering)
- CH 157 Insectivorous Plants
- CH 159 Comparison of Monocot & Dicot Plants
- CH 174 T.S. Dicot root
- CH 175 T.S.Monocot root
- CH 176 T.S.Dicot stem
- CH 177 T.S. Monocot stem
- CH 178 T.S.Dicot leaf
- CH 179 T.S. Monocot leaf
- CH 180 T.S. Dicot stem sec. growth
- CH 181 T.S.Dicot root Secondary Growth
- CH 182 Root modification
- CH 183 Stem modification (Aerial)
- CH 184 Leaf modification
- CH 185 Vegetative propagation
- CH 186 Artificial propagation
- CH 301 The Cell (Ultra Structure)
- CH 302 Animal Mitosis (Cell Division)
- CH 303 Animal Meiosis (Cell Division)
- CH 304 Animal Tissues part-I Connective Tissues
- CH 305 Animal Tissues part II Epithelial and Muscular Tissues
- CH 306 Animal Tissues Part III Blood and Nerve Tissues
- CH 315 Amoeba Structure & Locomotion
- CH 33 Entamoeba histolytica - Str. and L.H
- CH 35 Vermicularis enterobius Life History
- CH 36 Malarial Parasite Life History
- CH 37 Ascaris lumbricoides Life History
- CH 38 Fasciola hepatica (Liver Fluke) Life History

- CH 39 Ancylostoma duodenale (Hookworm) L.C
- CH 330 Taenia solium Structure & Life History.
- CH 355 Food Grain Pests
- CH 356 Housefly Life History
- CH 357 Mosquito L. H. Showing comparison of Culex & Anopheles
- CH 358 Butterfly Life History
- CH 359 Honey bee life history
- CH 360 Silkworm Life History
- CH 361 Grasshopper Life History
- CH 362 Cockroach L.H.
- CH 60 Water Cycle
- CH 61 Nitrogen Cycle
- CH 62 Carbon Cycle
- CH 63 Oxygen Cycle
- CH 68 Phosphorous Cycle
- CH 69 Sulphur Cycle
- CH 64 Environmental Pollution
- CH 65 Food Web
- CH 66 Food Chain
- CH 67 Land Pollution

SYSTEMS OF THE HUMAN BODY

- CH 551 Muscular System
- CH 552 Skeleton-I (Entire skeleton, vertebral column & skull)
- CH 553 Nervous System
- CH 554 Autonomic Nervous System
- CH 555 Arterial System
- CH 556 Venous System
- CH 557 Lymphatic System
- CH 558 Digestive System
- CH 559. Respiratory System
- CH 560. Excretory System
- CH 561. Female Reproductive System
- CH 562. Male Reproductive System
- CH 563. Endocrine System
- CH 597 Immune system

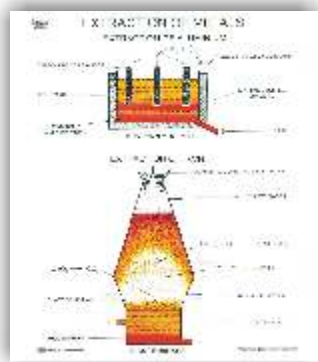
STRUCTURES/ORGANS

- CH 564. Heart
- CH 565. Brain
- CH 567. Skeleton-II (Vertebrae, Sacrum & Thoracic Cage)

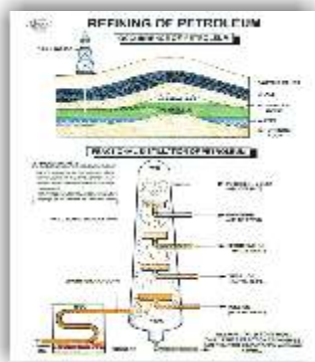
- CH 568. Skeleton III (Girdles & Limbs)
- CH 569. Vertebral Column
- CH 570. Human Skull
- CH 571. Head & Neck
- CH 572. Eye
- CH 573. Ear
- CH 574. Ear, Nose & Throat
- CH 575. Skin
- CH 576 Nephron
- CH 577 Shoulder & Elbow
- CH 578 Hand & Wrist
- CH 579 Hip & Knee
- CH 780 Foot & Ankle
- CH 581. Teeth
- CH 583. Kidney
- CH 586. Embryo Development
- CH 587. Human Anatomy
- CH 587A. Human Blood Cells.
- CH 588 Nose
- CH 589 Tongue
- CH 590 Human Joints
- CH 301 The Cell
- CH 592 Menstrual Cycle
- CH 593 Spinal cord
- CH 594 Sense organs
- CH 595 Muscles
- CH 596 Bone & cartilage
- CH 597 Human Immune System
- CH 307 Gametogenesis
- CH 308 Fertilization
- CH 309 Oogenesis
- CH 310 Spermatogenesis
- CH 10 DNA
- CH 11 RNA

The Following charts are available on Superfine White Rexine which are waterproof and fitted with light weight plastic rollers.

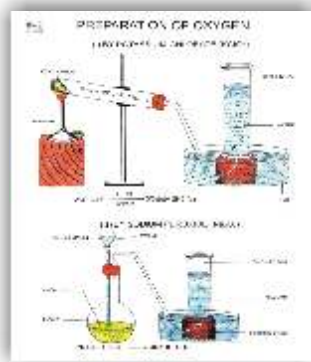
Size 30"X40"Approx



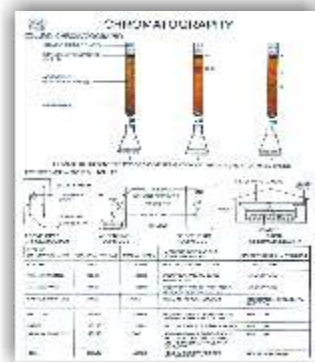
CH 896



CH 897



CH 898



CH 934

- *CH 877 Periodic Tables of the Elements
- *CH 877A Jumbo Periodic Table (48"x60")
- CH 877B Mendeleev Periodic Table
- CH 878 Shapes of atomic Orbitals
- CH 879 Relative Energies of Orbitals
- CH 880 Formation of Molecular orbitals
- CH 881 Geometry of Molecules Part - I
- CH 882 Geometry of Molecules Part - II
- CH 883 Hybridisation
- CH 885 Confirmation in Hydrocarbons
- CH 886 Structure of Ionic Solids
- CH 872 Types of Crystal Structure
- CH 888 3D Arrangement in Solids
- CH 889 Structural Isomerism Part - I
- CH 890 Structural Isomerism Part - II
- CH 891 Stereoisomerism Part -I
- CH 892 Stereoisomerism Part -II
- CH 893 Estimation of Nitrogen
- CH 894 Determination of Molecular Mass
- CH 869 Nuclear Fission and Fusion

- CH 896 Extraction of Metals
- CH 897 Refining of petroleum
- CH 898 Preparation of Oxygen
- CH 899 Preparation of Hydrogen
- CH 912 Oxidation & Reduction
- CH 920 Extraction of Iron
- CH 923 Distillation
- CH 924 Soap Manufacturing
- CH 926 Preparation of CH₄, C₂H₄ & C₂H₂
- CH 927 Principles of Extraction
- CH 929 Corrosion
- CH 930 Lattice Defects
- CH 934 Chromatography
- CH 935 Synthetic Dyes
- CH 936 Acids, Bases & Salts
- CH 939 First Aid in Laboratory
- CH 940 Lab. Safety Measures
- CH 941 Techniques used in Laboratory
- CH 942 Chemical Bonding
- CH 946 Food Test Chemical

SCIENTIST PHOTOS

Size 12"x18"

Laminated Framed on Board

Size 20"x26"

Laminated Framed on Board

Scientist/Medical Professional portraits

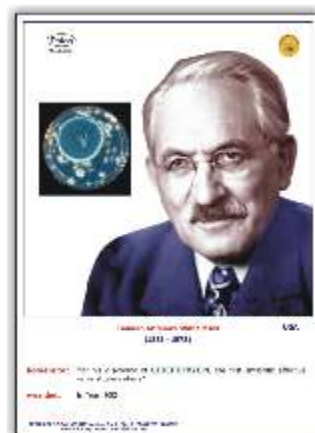
- | | |
|---------------------------------|-----------------------------|
| SP 01 Hippocrates (460-377B.C.) | SP 38 Ehrlich Paul |
| SB 03 Gregor John Mendel | SP 41 Sir Alexander Fleming |
| SB 08 Aristotle | SP 40 Susruta |
| SP 18 Frederick Sanger | SP 40A Charak |

Famous Nobel Prize Winner in Medical Field

- | | |
|-----------------------------------|---------------------------|
| 1. Ronald ROSS | 9 Sir James W. BLACK |
| 2. Robert KOCH | 10 Rudolph Bucheimm |
| 3. Charles Louis alphonse LAVERAN | 11 Selman Abraham Waksman |
| 4. Ernst Boris CHAIN | 12 Sertuner |
| 5. Sir Alexander FLEMING | 13 Seydler |
| 6. Sir Howard Walter FLOREY | 14 Bentham & Hooker |
| 7. George H. HITCHINGS | 15 Swede Linnacous |
| 8. Gertrude B. ELION | |



SP 41 Sir Alexander Fleming



Selman Abraham Waksman

ASK for Customised List

**Digital Photographs showing Synonym, Family, Biological Source, Active Constituents & Uses.
Thick Laminated & Framed on NU-Wood Board**

Size 12"X18"Approx

CH 2600 PHARMACIST'S OATH

- CH 2601 BAHERA
- CH 2602 ARCHI OIL
- CH 2603 PAPAIN
- CH 2604 SHANKHPUSHPI
- CH 2605 SHARK LIVER OIL
- CH 2606 COTTON
- CH 2607 ASWAGANDHA
- CH 2608 TAMARINDS
- CH 2609 SENNA LEAVES
- CH 2610 BRAHMI
- CH 2611 PUNARNAVA
- CH 2612 RHUBARB
- CH 2613 NEEM OIL
- CH 2614 AJOWAN
- CH 2615 STROPHANTHUS
- CH 2616 BAEL
- CH 2617 ACACIA (INDIAN GUM)
- CH 2618 COCOA
- CH 2619 TURMERIC
- CH 2620 BITTER ORANGE PEEL
- CH 2621 NUX-VOMICA
- CH 2622 BLACK PEPPER
- CH 2623 OPIUM
- CH 2624 JATAMANSI
- CH 2625 CANNABIS
- CH 2626 VINCA
- CH 2627 ISAPGOL (ISPAGHULA)
- CH 2628 GINGER
- CH 2629 CINNAMON
- CH 2630 VASAKA
- CH 2631 CELERY
- CH 2632 ARJUNA BARK
- CH 2633 VALERIAN
- CH 2634 CLOVE BUD
- CH 2635 LINSEED OIL
- CH 2636 GYMNEMA
- CH 2637 NUTMEG
- CH 2638 DIGITALIS
- CH 2639 CHAULMOOGRA
- CH 2640 GINSENG ROOTS
- CH 2641 EUCALYPTUS
- CH 2642 BLACK CATECHU
- CH 2643 GARLIC
- CH 2644 PEPPERMINT
- CH 2645 TULSI
- CH 2646 PYRETHRUM
- CH 2647 AMLA
- CH 2648 MOMORDICA
- CH 2649 CUMMIN
- CH 2650 VIDANG
- CH 2651 HYOSCYAMUS
- CH 2652 SAGE
- CH 2653 DIOSCOREA
- CH 2654 L.H.ERGOT
- CH 2655 ALOE
- CH 2656 ALMONDS
- CH 2657 LEMON PEELS
- CH 2658 THEVETIA
- CH 2659 PICRORRHIZA
- CH 2660 YEAST
- CH 2661 CINCHONA
- CH 2662 IPECACUANHA
- CH 2663 SANDAL WOOD
- CH 2664 CARDAMOM
- CH 2665 CASTOR OIL
- CH 2666 COLCHICUM CORM
- CH 2667 DATURA
- CH 2668 CASSAVA
- CH 2669 PTEROCARPUS
- CH 2670 SHATAVARI
- CH 2671 KURCHI
- CH 2672 TABACCO
- CH 2673 GOKHURU
- CH 2674 AGAR
- CH 2675 SPIRULINA
- CH 2676 GINKGO
- CH 2677 CEDAR WOOD
- CH 2678 GUAR GUM
- CH 2679 PECTIN
- CH 2680 BEES-WAX
- CH 2681 RICE BRAN OIL
- CH 2682 COD LIVER OIL
- CH 2683 PODOPHYLLUM
- CH 2684 JALAP
- CH 2685 MYRRH
- CH 2686 ASAFOETIDA
- CH 2687 BENZOIN
- CH 2688 MENTHA
- CH 2689 LEMON GRASS OIL
- CH 2690 CITRONELLA
- CH 2691 CARAWAY
- CH 2692 CHENOPODIUM
- CH 2693 MUSK
- CH 2694 PALMAROSA
- CH 2695 GAULTHERIA OIL
- CH 2696 VANILLA
- CH 2697 SESAME OIL
- CH 2698 RUE PLANT
- CH 2699 RUBBER PLANT
- CH 2700 EVENING PRIMROSE OIL
- CH 2701 MADAR
- CH 2702 MANGO
- CH 2703 POMEGRANATE
- CH 2704 GRAPESVINE
- CH 2705 PINEAPPLE
- CH 2706 PSORALEA SEEDS
- CH 2707 INDIAN HEMP
- CH 2708 INDIAN PENNY WORT
- CH 2709 GREATER CARDAMOM
- CH 2710 CARROT
- CH 2711 AZTEC
- CH 2712 TINOSPORA
- CH 2713 CLUSTER FIG
- CH 2714 EAST INDIAN GLOBE THISTLE
- CH 2715 SHOE FLOWER
- CH 2716 THE CHEBULIC
- CH 2717 JAMBOL

- CH 2718 BOUHINIA
- CH 2719 OLEANDER
- CH 2720 FEVER NUT
- CH 2721 NEGRO COFFEE
- CH 2722 ANTIDYSENTERICA
- CH 2723 SENSITIVE PLANT
- CH 2724 BLACK NIGHT
- CH 2725 EMETIC NUT
- CH 2726 SWEET MARJORAM
- CH 2727 HENNA
- CH 2728 RED CHILLIES
- CH 2729 BULLET WOOD TREE
- CH 2730 RADISH
- CH 2731 LIQUORICE ROOT
- CH 2732 NUT-GRASS
- CH 2733 FIVE LEAVED CHASTE
- CH 2734 JUNGLE FLAME
- CH 2735 BETEL
- CH 2736 FOETID CARRIA
- CH 2737 SPROUT LEAF PLANT
- CH 2738 PEEPAL TREE
- CH 2739 LONG PEPPER
- CH 2740 INDIAN MUSTARD
- CH 2741 BLACK MUSTARD
- CH 2742 SOAPNUT TREE
- CH 2743 HORSE-RADISH TREE
- CH 2744 PURPLE TEPHROSIA
- CH 2745 PRICKLY POPPY
- CH 2746 MILK BUSH
- CH 2747 SISSOO
- CH 2748 SUNFLOWER
- CH 2749 GINGELLY SESAME
- CH 2750 DEVIL'S COTTON
- CH 2751 SWEET FLAG ROOT
- CH 2752 ACONITE
- CH 2753 INDIAN KUDZU
- CH 2754 *Uraria picta*
- CH 2755 *Barleria prionitis*
- CH 2756 *Gmelina arborea*
- CH 2757 TRIPHALA



CH 2607



CH 2612

These Dbios Pharmacology Charts are rare collection of vivid depictions of pharmacology topic as per mentioned in A.I.C.T.E. Syllabus.

Dbios PHARMACOLOGY CHARTS

Size 20"x26"

Thick Laminated both side & attached with strips

DPHc 02 Pharmacology of Central Nervous System (in 7 Charts)

- Neurohumoral transmission in the C.N.S.
- General Anesthetics.
- Anti-epileptics drugs.
- Anti-Parkinsonian Drugs.
- Analgesics, Antipyretics and Anti-gout drugs.
- Narcotic analgesics and antagonists.
- C.N.S. Stimulants

DPHc 03 Pharmacology of Cardiovascular System (in 5 Charts)

- Digitalis and cardiac glycosides.
- Antihypertensive drugs.
- Antianginal and Vasodilator drugs.
- Antiarrhythmic drugs
- Antihyperlipedimic drugs

DPHc 04 Drugs Acting on the Hemopoietic System (in 2 Charts)

- Anticoagulants, Vitamin K and hemostatic agents.
- Fibrinolytic and anti-platelet drugs.

DPHc 05 Drugs acting on urinary system (in 2 Charts)

- Fluid and electrolyte balance
- Diuretics

DPHc 06 Autocoids (in 2 Charts)

- Histamine, 5- HT and their antagonists.
- Prostaglandins, thromboxanes and leukotrienes.

DPHc 09 Pharmacology of Endocrine System (in 6 Charts)

- Hypothalamic and pituitary hormones.
- Thyroid hormones and anti thyroid drugs.
- Insulin, oral hypoglycaemic agents and Glucagon.
- ACTH and corticosteroids
- Androgens and anabolic steroids
- Estrogens, progesterone and oral contraceptives

DPHc 21 Events during biofilm formation

DPHc 22 Identification and classification process of bacteria by culturing

DPHc 23 Schematic representation of immune defenses in the oral cavity.

DPHc 24 Schematic illustration of microbial complexes detected in dental plaque

DPHc 25 DNA Viruses

DPHc 26 RNA viruses

DPHc 27 Clinical appearance of viral infections in the oral cavity

DPHc 28 How oral microbes produce local inflammation to influence systemic pathology.

DPHc 29 Structure of viruses

DPHc 30 Morphology of Bacteria

DPHc 31 Schematic Diagram of an Immunoglobulin (IgG)

DPHc 32 Oral Candidiasis

DPHc 33 Hypersensitivity Reactions

DPHc 34 Malaria parasites

DPHc 35 HIV life cycle

DPHc 36 Bacterial cell wall

DPHc 37 Action of Sympathetic and Parasympathetic Nervous Systems on Effector Organs

DPHc 38 Therapeutic Indications for the Primary Anticonvulsant Agents

DPHc 39 Action Potential of a Purkinje Fiber

DPHc 40 Schematic Diagram of the Effects of Antiarrhythmic Drugs

DPHc 41 Metabolism of Plasma Lipoproteins

DPHc 42 Ventricular Function Curves in the Normal Heart, in Heart Failure (hf), and in Hf Treated with Digitalis

DPHc 43 Antiretroviral Drugs

DPHc 44 Types of Action of Drugs used to Treat peptic Ulcer Disease

DPHc 45 Mechanism of Action of Cyclosporine and Tacrolimus.

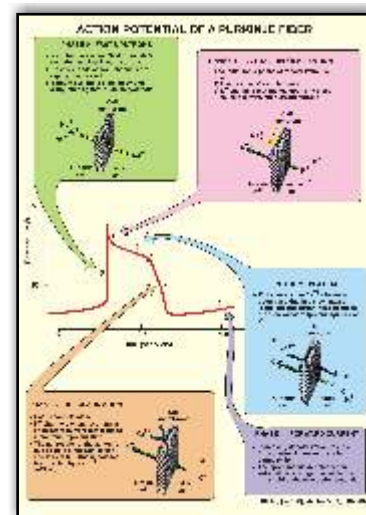
DPHc 46 Biosynthesis of Thyroid Hormones.

DPHc 47 Sites of Action of Diuretic Drugs in the Nephron

DPHc 48 Drug Administration from application to distribution in the body

DPHc 49 Drug administration dosage forms for parental, pulmonary, rectal or vaginal and cutaneous application

DPHc 50 Drug administration dosage forms for oral, ocular and nasal applications



DPHc 39 Action Potential of a Purkinje Fiber

Dbios CLINICAL PHARMACY CHARTS

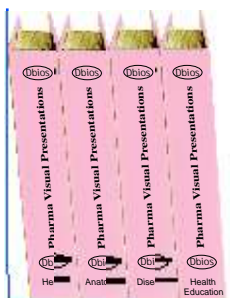
Size 20"x26"

Thick Laminated both side & attached With Strips

PRINCIPLE & PROCEDURES ADOPTED IN DISPENSING OF MIXTURES

- | | |
|-------------------------------------------|---------------------|
| 1. Mixture Solutions & Emulsions | 6. Cephalosporins |
| 2. Creams & Ointments | 7. Penicillin |
| 3. Powder, Paste, Suppositories & Jellies | 8. Quinolones |
| 4. Ophthalmics, Lozenges & Pills | 9. Local Analgesic |
| 5. Liniments, Inhalations Paints & Sprays | 10. Antidepressants |

Multicoloured O.H.P. Transparencies



Medicinal Herbs (Set of 100 O.H.P. Transparencies)

One Volume

As per above mentioned List from CH2601 to CH 2700.

Human Anatomy (Set of 100 O.H.P. Transparencies)

One Volume

Human Diseases (Set of 100 O.H.P. Transparencies)

One Volume

Health Education (Set of 100 O.H.P. Transparencies)

One Volume

SECTION CUT MODELS

- | | |
|----------|----------------------------------------|
| MOD 164 | TYPICAL PLANT CELL (ON BOARD) |
| MOD 165 | MITOSIS PLANT CELL DIVISION (ON BOARD) |
| MOD 166 | MEIOSIS PLANT CELL DIVISION (ON BOARD) |
| MOD 167 | MONOCOT ROOT T.S. (ON BOARD) |
| MOD 168 | DICOT ROOT T.S. (ON BOARD) |
| MOD 172 | MONOCOT STEM T.S. (ON BOARD) |
| MOD 173 | DICOT STEM T.S. (ON BOARD) |
| MOD 173a | MONOCOT LEAF T.S. (ON BOARD) |
| MOD 174 | DICOT LEAF T.S. (ON BOARD) |
| MOD 178 | TYPICAL FLOWER (ALL PARTS DETACHABLE) |
| MOD 178a | TYPICAL FLOWER (ON BOARD) |



CRUDE DRUGS

Powdered Drugs, Natural Colours, Oils, Fibers etc. To be supplied in pearlpet jars.

- | | |
|-------------------------------------------------------|--------------|
| With detail descriptions on separate framed key cards | (Set of 100) |
| Without detail descriptions | (Set of 100) |

MICROSCOPIC SLIDES

- | | |
|---------------------------------------|----------------------|
| Pharmacy Botany Slides (Microscopic) | (Set of 50 in a box) |
| Pharmacy Zoology Slides (Microscopic) | (Set of 50 in a box) |
| Human Histology Slides | (Set of 50 in a box) |

PROJECTION SLIDE

- | | |
|-------------------------|-----------------------|
| Medicinal plant (2"x2") | (Set of 100 in a box) |
|-------------------------|-----------------------|

Electronic & Pharmacy Instrument

PARTICULARS

Kymograph {Recording Drum}
 Du-Bios Key
 Smoking Stand
 Smoking Burner
 Paper Clip
 Simple Lever
 Starling Heart Lever
 Starling Writing Lever
 Muscle Chamber
 Mayo Graph Lever
 Mayo Graph Board
 Mayo Graph Stand

PARTICULARS

Simple Key
 Simple Electrode
 Student Stimulator
 Student Stimulator digital
 Tunic Fork KN-100
 Muscle Electrode
 Muscle Lever
 Muscle Grip
 Hook Weight Set
 Time Marker
 Induction Coil
 Lucas Moist Chamber

S.No.	PARTICULARS	S.No.	PARTICULARS
1.	Ampoule Filling & Sealing	35.	Color Perception Lantern
2.	Ampoule Washing		Edridge Green
3.	Antibiotic Zone Reader	36.	Cube Mixer
4.	Actophoto Meter	37.	Double Cone Blender
5.	Analgesimeter Tail Flick	38.	Disintegrator {Willy Mill}
6.	Analgesimeter (Eddy's Hot Plate)	39.	Dale's Organ Bath
7.	Analgesimeter (Eddy's Hot Plate) with PID Controller	40.	Douglas Bag
8.	Autopsy Table	41.	Electro Convulsometer Simple
9.	Algometer	42.	Electro Convulsometer Digital
10.	All Purpose Equipment	43.	Gaduums Outflow Recorder
11.	Ampoule Clarity	44.	Glass Bead Sterilizer
12.	Aseptic Cabinet	45.	Histamine Chamber
13.	Bicycle Algometer	46.	Hand Grip Dynameters
14.	Ball Mill 1 kg	47.	Hair Asthisimeter
15.	Ball Mill 1 kg Heavy	48.	Heating Mental
16.	Ball Mill 2 kg	49.	Hook Grip
17.	Ball Mill 5 kg	50.	Jar Test Apparatus
18.	Bottle Filling Machine Hand Operated		a. Two Jar Test Apparatus
19.	Bottle Filling Machine Automatic		b. Three Jar Test Apparatus
	Single Syringe SS Cover		c. Four Jar Test Apparatus
20.	Bottle Cap Sealing Machine		d. Five Jar Test Apparatus
21.	Bottle Washing Single Brush		e. Six Jar Test Apparatus
22.	Bottle Washing Double Brush		Optional:- Digital R.P.M.
23.	Bulk Density		“ Timer
24.	Bulk Density Digital Timer	51.	Kymograph Paper
25.	Bulk Density Digital Timer & Counter	52.	Knee Hammer
26.	Bone Cutting Machine	53.	Laboratory Stirrer with speed Regulator
27.	Cook's Pole Climbing	54.	Lipstick Mould 4 hole
28.	Capsule Filling Machine 100 Capsule		“ “ 6 hole
29.	Capsule Filling Machine 300 Capsule		“ “ 12 hole
30.	Capsule Counter	55.	Laminar Wooden 2x2
31.	Collapsible Tube Filling Machine	56.	Laminar SS 2x2
32.	Collapsible Tube Filling machine Motorized 5ml-50ml	57.	Marry Tambour 18mm
33.	Collapsible Tube Sealing Machine	58.	Mosses Ergo graph
34.	Compass Aesthesiometer	59.	Mammalian Heart Perfusion Assembly
		60.	Magnetic Stirrer with hot plate
		61.	Mercury Manometers
		62.	Maddox Rod

S.No.	PARTICULARS	S.No.	PARTICULARS
63.	Melting Point	100.	Tablet Disintegration Double Test Apparatus with Digital Temp. \$ R.P.M.
64.	Melting Point Digital Temp.	101.	Tablet Friability Single Test
65.	Operation Table for Animal	102.	Tablet Friability Single Test Digital Timer
66.	Operation Table Small	103.	Tablet Friability Single Digital R.P.M
67.	Olfactometer	104.	Tablet Friability Single Digital Timer & R.P.M.
68.	Permeability Cup	105.	Tablet Friability Double Test
69.	Plenty Mixer	106.	Tablet Friability Double Test Digital Timer
70.	Piston Recorder	107.	Tablet Friability Double Digital R.P.M.
71.	Perimeter Listet Type	108.	Tablet Friability Double Digital Timer & R.P.M
72.	Perimeter Priestly Smith	109.	Tablet Dissolution Single Test
73.	Plethysmiograph	110.	Tablet Dissolution Single Test Digital R.P.M.
74.	Pulvelizer	111.	Tablet Dissolution Single Test Digital Temp.
75.	Powder Mass Mixer	112.	Tablet Dissolution Single Digital Temp. & R.P.M.
76.	Physiograph Single Channel	113.	Tablet Dissolution Six Test with Digital Timer, Temp. & R.P.M. Automatic UP/DOWN
	“ Double Channel	114.	Tablet Making Machine Hand Operated
	“ Three Channel	115.	Tablet Making Machine Motorized
77.	Polygraph Single Channel	116.	Tissue Homogenizer 30 ml.
	“ Double Channel	117.	Tincture Press 1 kg capacity Tincture Press Heavy
	“ Three Channel	118.	Telethermometer Six Probe
78.	Rota Rod	119.	Telethermometer Single Probe
a.	Two Compartment	120.	Tablet Hardness Tester Monsanto
b.	Three Compartment	121.	Tablet Hardness Tester Pfizer
c.	Four Compartment	122.	Tablet Counter
d.	Five Compartment	123.	Tetanus Set
	Optional :- Digital R.P.M.	124.	Tablet Coating Pan with Gear Motor
79.	Rotary Vacuum Film Evaporator (Buchi Type)	125.	Tablet Coating Pan with ½ HP Motor + Gear Box
80.	Respiration Pump 500cc	126.	Tablet Polishing Pan
81.	Recording Drum	127.	Tissue Processing Unit (Single)
82.	Rabbit Cage	128.	Tissue Culture Rack
83.	Rabbit Holder	a.	Two Rack
84.	Suppository Mould 4 hole	b.	Four Rack
	“ “ 6 hole	c.	Six Rack
	“ “ 12 hole	129.	Thermnethsiometer
85.	Sterility Test 3 test	130.	U.V. Cabinet
86.	Swimming Test Apparatus	131.	Vacuum Pump 15 ltr. Oil free
87.	Slide Cabinet 1000	132.	Vacuum Pump 25 ltr. Oil free
88.	Student Organ Bath Single Unit	133.	Vacuum Pump 45 ltr. Oil free
89.	Student Organ Bath Double Unit	134.	Volume Recorder
90.	Student Organ Bath Single Unit with Digital Temp. \$ Stirrer	135.	Varnish Tray
91.	Student Organ Bath Double Unit with Digital Temp. \$ Stirrer	136.	Variable Interrupter
92.	Student Organ Bath Four Unit	137.	Vibrating Reed
93.	Student Spiro Meter 6 ltr. Capacity	138.	Venus Presser Apparatus
94.	Super Speed Kymograph	139.	Water Still Distillation SS
95.	Stethograph		
96.	Stepdown Transformers		
97.	Tablet Disintegration Single Test Apparatus		
98.	Tablet Disintegration Single Test Apparatus with Digital Temp.		
99.	Tablet Disintegration Double Test Apparatus		

HUMAN MODELS

- MOD 100 HUMAN BODY OR HUMAN TORSO (90cm.) MALE
- MOD 101 HUMAN TORSO SIZE (90cm.) FEMALE
- MOD 102 HUMAN TORSO (SEXLESS) SIZE 90cm. 8 PARTS
- MOD 103 MINI HUMAN TORSO SIZE (52cms. APP.)
- MOD 105 BRAIN 2 PARTS (WITHOUT STAND)
- MOD 106 BRAIN 4 PARTS (WITHOUT STAND)
- MOD 107 HUMAN EYE (ON STAND)
- MOD 108 HUMAN EAR (ON BOARD)
- MOD 110 HUMAN SKIN (ON BOARD)
- MOD 111 HUMAN HEART 4 PARTS
- MOD 112 HUMAN HEART 2PARTS
- MOD 114 HUMAN LUNG (ON STAND)
- MOD 116 KIDNEY IN SECTION (ON STAND)
- MOD 117 HUMAN CIRCULATORY SYSTEM (ON BOARD)
- MOD 118 HUMAN NERVOUS SYSTEM (ON BOARD)
- MOD 119 HUMAN REPRODUCTIVE SYSTEM MALE (ON BOARD)
- MOD 120 HUMAN REPRODUCTIVE SYSTEM FEMALE (ON BOARD)
- MOD 121 HUMAN DIGESTIVE SYSTEM (ON BOARD)
- MOD 122 HUMAN RESPIRATORY SYSTEM (ON BOARD)
- MOD 123 HUMAN LIVER (ON STAND)
- MOD 124 STOMACH (ON STAND)

Size 20"x26"

Set of 10 Charts

Thick Laminated both side & attached with Plastic Strips

History of Medicine Charts

Thick Laminated & Framed on NU-Wood Board



History of Medicine - I



History of Medicine - II



History of Medicine - III



History of Medicine - VI



History of Medicine - VII



History of Medicine - VIII

- History of Medicine - I
- History of Medicine - II
- History of Medicine - III
- History of Medicine - IV
- History of Medicine - V
- History of Medicine - VI
- History of Medicine - VII
- History of Medicine - VIII
- History of Medicine - IX
- History of Medicine - X

IMP- 126 IMPORTED SKELETON (USA)



Male

IMP 2 Human Body Muscles with Internal organs



All Skeleton Parts are Near to Original

Full skeleton complete (Loose Bones)

- Skull With Mandible 3parts**
- Ribs (L&R)**
- Sternum**
- Humerus, Radius, Ulna (Left)**
- Humerus, Radius, Ulna (Right)**
- Pelvis (L&R)**
- Sacrum**
- Femur, Tibia, Fibula (Left)**
- Femur, Tibia, Fibula (Right)**
- Vertebral Column (Disarticulated)**
- Cervical Vertebrae (Set of 7)**
- Thoracic Vertebrae (Set of 12)**
- Lumbar Vertebrae (Set of 5)**
- Hand Disarticulated (L&R)**
- Foot Disarticulated (L&R)**

IMP- 126 F IMPORTED SKELETON (USA)

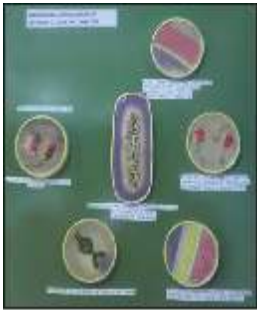


Female

IMP- 127 IMPORTED MR. SUPERSKELTON (USA)



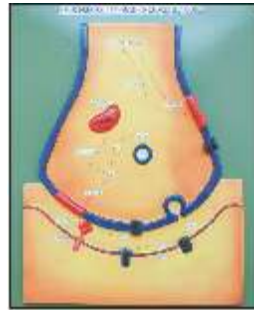
Dbios Pharmacology Models



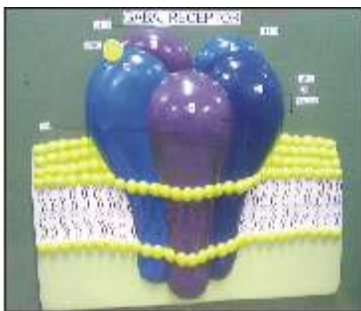
PCM 01
ANTIMICROBIAL DRUG ACTION ON
DIFFERENT SITES OF BACTERIAL CELL



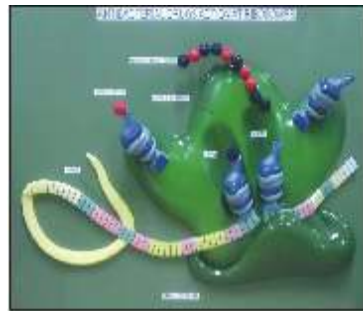
PCM 02
TYROSINE KINASE
RECEPTOR



PCM 03
NEUROHUMORAL TRANSMISSION
OF ACETYLCHOLINE



PCM 04
GABA_A RECEPTOR



PCM 05
ANTIBACTERIAL DRUGS ACTION
AT RIBOSOMES

- PCM 01 ANTIMICROBIAL DRUG ACTION ON DIFFERENT SITES OF BACTERIAL CELL
- PCM 02 TYROSINE KINASE RECEPTOR
- PCM 03 NEUROHUMORAL TRANSMISSION OF ACETYLCHOLINE
- PCM 04 GABA_A RECEPTOR
- PCM 05 ANTIBACTERIAL DRUGS ACTION AT RIBOSOMES
- PCM 06 ADVERSE EFFECTS OF CORTICOSTEROIDS
- PCM 07 SITE OF DRUG ACTION IN GLAUCOMA
- PCM 08 DRUG SIDE EFFECTS
- PCM 09 PAIN PATHWAYS
- PCM 10 HYPERTENSION
- PCM 11 DIABETES MELLITUS (Sulfonylureas, Biguanides)
- PCM 12 ANTIDIARRHEAL DRUGS & THEIR ADVERSE EFFECTS
- PCM 13 CORTI COSTERIODS ACTION IN BRONCHIAL ASTHMA & ADVERSE EFFECTS
- PCM 14 HIV INFECTIONS, NRTIS & NON-NRTIS

